

**Interreg**



Co-funded by  
the European Union

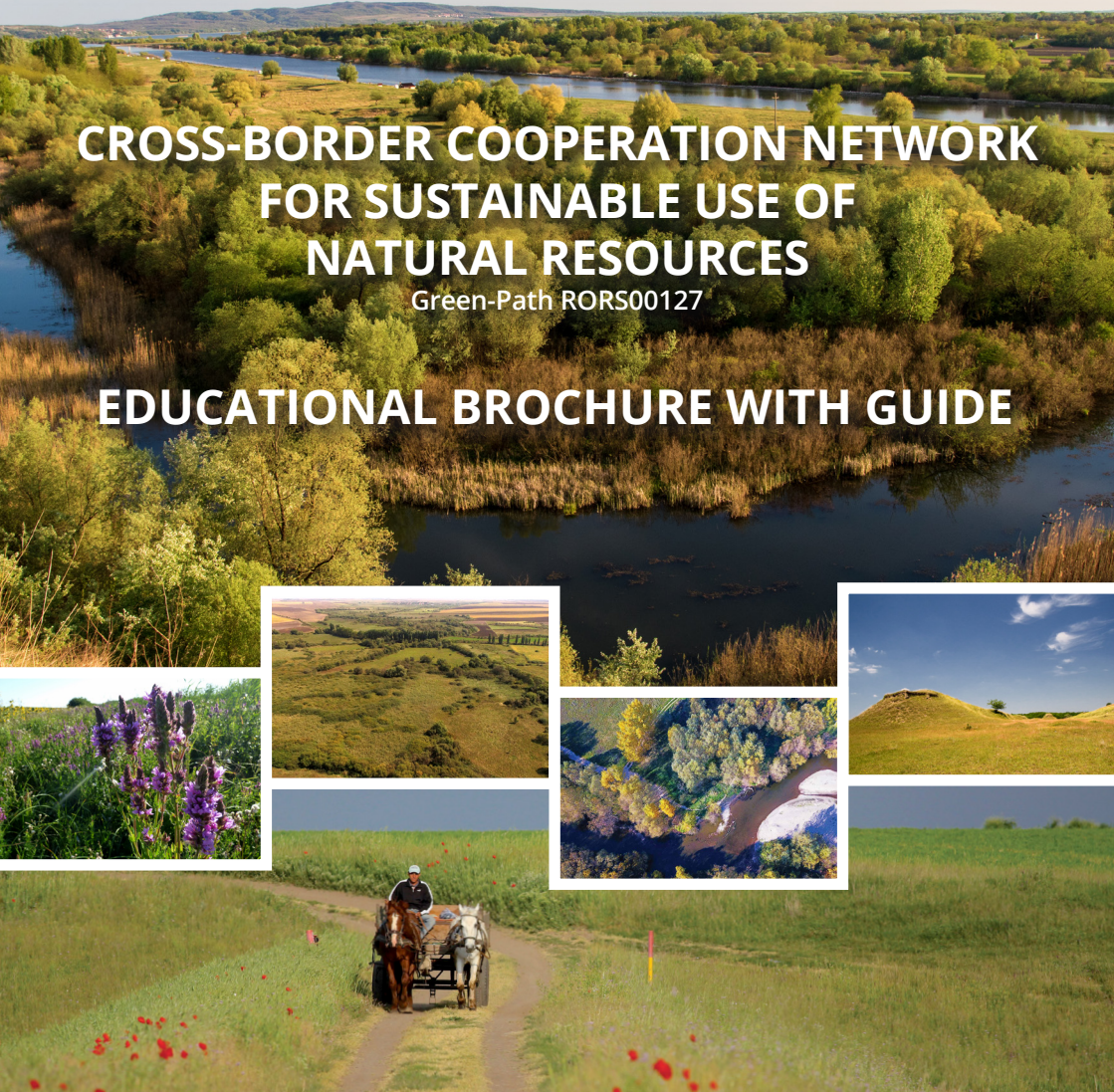


**IPA** Romania – Serbia

# CROSS-BORDER COOPERATION NETWORK FOR SUSTAINABLE USE OF NATURAL RESOURCES

Green-Path RORS00127

## EDUCATIONAL BROCHURE WITH GUIDE



Project partners:



Lead partner Excelsior Association for  
the Promotion of Natural and Cultural  
Heritage of Banat and Crisane 2



Provincial Secretariat for  
Urban Planning and  
Environmental Protection



Local Government  
of Bela Crkva



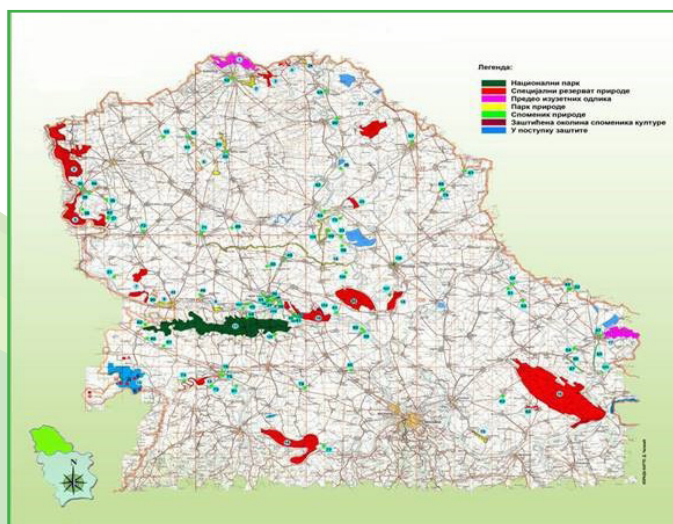
Association  
My Nature  
Romania

## Educational Brochure on the Natural Values of the “Green Path” Project Area

The richness and diversity of Vojvodina’s natural heritage are characterised by remarkable ecosystem, species and genetic diversity. The southeastern part of the Pannonian Basin is distinguished by exceptional natural and landscape units, unique in this part of Europe, such as: the Deliblato Sands (the largest sand complex in Europe), the Fruška Gora and Vršac Mountains, the great lowland rivers (the Danube, Sava, Tisza, Bega and Timiș) and their wide floodplains (Apatin, Monoštor and Kovilj marshlands, Obedska and Carska Bara swamps), the vast steppe areas of central and northern Banat, loess formations along the Tisza River (e.g., Titelski Breg Hill) and the Danube River (river islands and bluffs near Slankamen), as well as preserved saline habitats of Banat, unique at the national level, such as Slano Kopovo, Rusanda and Okanj.

The protection of Vojvodina’s natural heritage has a remarkably long tradition, while the tasks related to the conservation, preservation and improvement of its rich natural heritage require a multidisciplinary approach. Special attention is paid to the protection, restoration and revitalisation of the sensitive ecosystems that make Vojvodina distinctive — such as wetland habitats, salt marshes, steppes and inland sand dunes.

In the Autonomous Province of Vojvodina, there are currently 143 protected natural areas, covering a total of 208,282 hectares, which represents 9.63% of the total area of Vojvodina. In addition to their national importance, several of these protected areas also hold international conservation status, including 8 Ramsar sites (wetlands of international importance), 21 IBA sites (Important Bird Areas) and 27 IPA sites (Important Plant Areas).



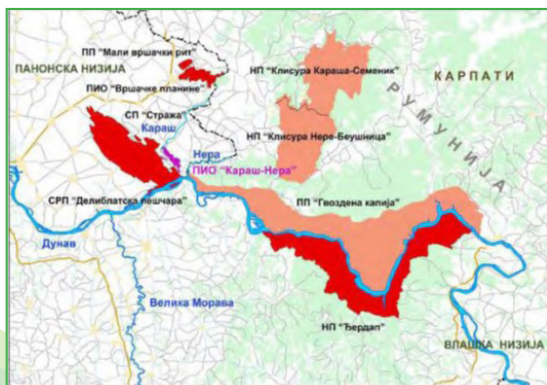
The project “Cross-Border Cooperation Network for Sustainable Use of Natural Resources – Green Trail”, implemented within the Interreg IPA Cross-border Cooperation Programme Romania–Serbia 2021–2027, is based on strengthening cross-border cooperation aimed at improving the **sustainable use of natural resources**, with a **special focus on joint activities in the field of nature, water, and air protection**. This approach implies the integration of objectives and measures aimed at protecting and improving the condition of natural resources, as well as the alignment of all sectoral policies, the harmonisation of national regulations with EU legislation, as well as their full implementation.

The project area of Caraş–Nera and Mlaştinile Satchinez belongs to the Pannonian bioregion, which includes a wide variety of habitats, such as: lowland meanders, torrential rivers, riparian forests, sandy pastures and dunes and is characterised by rich biodiversity. The project introduces a new approach by actively involving local communities in the management, improvement and promotion of natural values, with the aim of achieving sustainable development, both on the Serbian and Romanian sides, since “nature knows no borders”. The main project objectives are, as follows: sustainable development of cross-border local communities, enhancement of nature and biodiversity protection and conservation, expansion of green infrastructure connecting habitats, strengthening ecological corridors, reduction of landscape fragmentation and promotion of their recreational potential, reduction of all forms of pollution, as well as improvement of air and water quality monitoring.

### Landscape of Outstanding Features “Caraş–Nera”

This protected natural area is located in the southeastern part of Vojvodina, immediately adjacent to the border with Romania, within the southern Banat region.

The “Caraş–Nera” protected area directly borders the Deliblato Sands protected area, on the edge of the Pannonian Plain, between the Carpathians and the Danube River, near the Morava Valley, which serves as a corridor to the Balkans and the Mediterranean, and the Đerdap Gorge, which forms a corridor to the Wallachian Plain. This area also adjoins the existing protected areas, including the LOF “Vršac Mountains”



and “Đerdap” National Park in Serbia, as well as the “Caraş Gorge–Semenic” National Park, “Nera Gorge– Beuşniţa” National Park “Iron Gate” Nature Reserve in Romania.

The entire protected area lies within the Bela Crkva Municipality and is composed of three spatial units: “Caraş”, “Nera” and “Mali Pesak”, covering a total area of 1,541.27 ha, of which 984.36 ha (63.87%) fall under protection regime II, while 556.92 ha (36.13%) are under protection regime III.

The “**Caraş**” spatial unit includes a part of the large Caraş oxbow lake near Kajtasovo, formed by the excavation of the DTD canal.

The “**Nera**” spatial unit encompasses the entire course of the eponymous river in Serbia. However, due to inadequate mapping data, only the most important sections of the river and its riparian areas near Kusić, Vračev Gaj and at its confluence with the Danube, are described in cadastral records.

The “**Mali Pesak**” spatial unit includes grass-covered sandy and steppe habitats along the left bank of the Caraş, from Grebenac to Banatska Palanka, as well as the Caraş oxbow lakes on the left side of the DTD canal, which are spatially connected to Mali Pesak.

The Landscape of Outstanding Features “Caraş–Nera” is characterised by a striking dune relief, with nearby well-preserved meanders and armlets of the Caraş River, contrasting with the dry sandy habitats. Additional scenic value is provided by the natural course of the Nera River, with its gravel banks, shoals, and river islands, as well as the steep loess and sandy river bluffs of the Caraş River.

This protected landscape is rich in a diverse and abundant flora and fauna.



## Key representatives of flora:



In the area of the Nera River mouth, on wet meadows and wet forests, the adder's-tongue fern (*Ophioglossum vulgatum*) can be found. This species is very rare and endangered due to its specific habitat requirements. Each year, it produces only a single leaf, which grows slowly and the leaf stalk differentiates into a sterile and a fertile part.

Another strictly protected species is the marsh helleborine orchid (*Epipactis palustris*), which was once widespread in the lowland forest belt of Vojvodina, but is now extremely rare due to the loss of its natural habitat. Specimens have been recorded along the meanders of the Caraş River. This perennial orchid blooms from June to August and an interesting fact is that its nectar has a narcotic effect on visiting insects.



The sandy-steppe vegetation on Mali Pesak represents the most attractive part of this protected area. It has been preserved from overgrowth by invasive species thanks to regular extensive grazing. One of the species occurring in large numbers on the sandy area is the spring pheasant's-eye (*Adonis vernalis*), a herbaceous plant from the buttercup family. Its flowers appear in early spring, making it a harbinger of spring. The plant has a bitter and unpleasant taste, is highly toxic, yet also medicinal, as it is used in the production of drugs for heart diseases.



## Key representatives of fauna:



The sandy habitats are home to rare and endangered rodent species. In Serbia, the Mali Pesak site hosts the largest and densest population of the European Ground Squirrels (*Spermophilus citellus*), which is of exceptional national and international protection importance. The well-preserved steppe pastures of Mali Pesak represent some of the most intact habitats in the region, as traditional extensive livestock farming is still practiced here, contributing to the preservation of steppe pastures.



Birds of prey are particularly associated with the sandy habitat of Mali Pesak, where the largest and densest population of the European Ground Squirrels in Serbia is found. Particularly notable is the very rare Saker Falcon (*Falco cherrug*), which regularly preys on ground squirrels and nests in the surrounding small forests.



On the peripheral parts of the steppe pastures of Mali Pesak, the Lesser Blind Mole-Rat (*Spalax leucodon*) can be found. Unlike the European Ground Squirrels, it feeds on the underground parts of plants. In addition, the digging activity of the Lesser Blind Mole-Rat, as a relatively large animal, has multiple ecological functions in soil biology. Besides aerating the soil, it mixes different soil layers, enriches the soil with humus through its droppings and stores food and plant material for nest building.

**The Satchinez Marsh Reserve**, also known as the “Delta of Banat”, is an ornithological reserve in Romania, covering an area of 1,194 hectares, located near the town of Satchinez in Timiș County. Administratively, the protected area spans the territories of the municipalities of Biled, Orțișoara, Satchinez and Variaș in Timiș County and the Municipality of Vinga in Arad County. The reserve includes the valleys of three streams, as follows: Apa Mare, Ier (Izvorin) and Sisco/ Șicșa, which converge upstream to form the Apa Mare stream.

The structure of the protected area is, as follows:

- 122 ha – the reserve itself;
- 1,072 ha – a mosaic buffer zone, which includes: Satchinez reservoir, Balta Bărateaz, Balta Mare, Balta Zootehnie, Balta Verbuncu and Rātu Mare.

Due to its exceptional value, particularly from an ornithological perspective, the area was designated as a reserve as early as 1942 upon the proposal of Romanian ornithologist Dionisie Lintia. The site was protected with the aim of preserving birds, especially those typical of wetlands and floodplain habitats. Thanks to aforementioned Romanian ornithologist Lintia who highlighted the value of this area, many nature and bird enthusiasts continued to study and explore this reserve. Today, it represents a true “oasis” for the stay and nesting of rare migratory bird species passing through the migration corridor. The most common period to observe birds in the reserve is from April to September, although it is not unusual for some rare migratory individuals to remain there during mild autumns and winters.

The more recent designation of this area is linked to Natura 2000, with special protection categories, including SPA (Special Protection Area) and SCI (Site of Community Importance) habitat types.

The climate of the area is characterised by long dry periods, so lake environments occur only during years with normal or abundant water levels. During dry years, water may completely disappear, which naturally affects the meadows within the protected area, as well as both invertebrate and vertebrate fauna. Periods of drought also negatively impact bird populations dependent on wetland habitats, during which their absence is often observed.

In this area, up to 40% of Romania's total bird fauna has been recorded, making it the second most

important bird congregation site after the Danube Delta.

Protected bird species breeding here include, as follows: the Pied Avocet (*Recurvirostra avosetta*), Little Egret (*Egretta garzetta*), Great Egret (*Ardea alba*), Black-Winged Stilt (*Himantopus himantopus*), Grey Heron (*Ardea cinerea*), Squacco Heron (*Ardeola ralloides*), Little Bittern (*Ixobrychus minutus*), Purple Heron (*Ardea purpurea*), Black-Crowned Night Heron (*Nycticorax nycticorax*) and others.



The list of habitats that are conservation targets for the Satchinez Marsh Nature Reserve include, as follows:

- 1530\* – Pannonian salt steppes and marshes,
- 3150 – Natural eutrophic lakes with Magnopotamion or Hydrocharition-type vegetation,
- 6420\* – Sub-Pannonian steppe grasslands,
- 6440 – Alluvial meadows of river valleys of the *Cnidion dubii*,
- 92A0 – Riparian gallery forests (marshes) of White Willow (*Salix alba*) and White Poplar (*Populus alba*)

An important conservation target for ROSCI0115 Satchinez Marsh is the habitat 1530\* – Pannonian and Ponto-Sarmatian salt steppes and marshes.

Species of community and national interest that represent conservation targets for ROSCI0115 Satchinez Marsh, according to the Natura 2000 Standard Data Form, include, as follows: the Eurasian Otter (*Lutra lutra*), European Ground Squirrel (*Spermophilus citellus*), European Fire-Bellied Toad (*Bombina orientalis*), European Pond Turtle (*Emys orbicularis*), Danube Crested Newt (*Triturus cristatus*), Spined Loach (*Cobitis taenia*), Weatherfish (*Misgurnus fossilis*), Noctuid Moth (*Arytrura musculus*), Fisher's Estuarine Moth (*Gortyna borelii lunata*), Large Copper Butterfly (*Lycaena dispar*).

Selected Species:

### **The European Pond Turtle (*Emys orbicularis*)**

**Photo: Florin Prunar**



The European Pond Turtle is a highly endangered species throughout its range and is legally protected in many European countries. It is generally dark brown with yellow spots. The shell is flat and oval and the tail is longer compared to other freshwater turtle species. It can be found in still or slow-flowing waters rich in vegetation, such as ponds, marshes, lakes and calm sections of rivers. The species is active during the warmer months, while from October to May it remains in hibernation. After emerging from hibernation, turtles mate and lay eggs once or twice per season. Their diet is

diverse: young turtles feed primarily on protein-rich food, while adults gradually shift toward a more plant-based diet.

### **The Purple Heron (*Ardea purpurea*)**

**Photo: Dan Stănescu**



The Purple Heron is a large bird, measuring 78–97 cm in length and standing height from 70 to 94 cm, with a wingspan of 120–152 cm. Adults have the forehead and the crown of the head black, with a dark stripe down the back of the neck that terminates in a slender, dangling crest. It inhabits marshes, lagoons, and lakes surrounded by dense vegetation. It is most active at dawn and dusk, and increases its daytime activity while raising its young. It feeds in shallow water, catching prey with its strong bill, mainly fish, small mammals, and amphibians, though it also eats nesting birds, snakes, lizards, crabs, aquatic snails, insects, and spiders. The Purple Heron usually nests in colonies, although solitary nests also occur. The eggs are bluish-green, typically four or five per clutch. Both parents incubate the eggs and care for the chicks.

### The Little Egret (*Egretta garzetta*)

Photo: Dan Stănescu



The Little Egret (*Egretta garzetta*) is a bird with a slender black beak and long black legs. It feeds in shallow water and on land, mainly on fish, amphibians, small reptiles, mammals, and birds, as well as crabs, molluscs, insects, spiders, and worms. It breeds in colonies, often alongside other wetland bird species and it builds the nest of twigs in trees, shrubs, or reeds. The eggs are bluish-green, and there are usually four or five per clutch. Both parents share incubation duties. Little Egrets are generally quiet, but in breeding colonies where they breed, they produce a variety of croaking and clucking sounds. When alarmed, they emit a sharp call. They are social birds and are often seen in small flocks.

### The Large Copper (*Lycaena dispar*)

Photo: Florin Prunar



The Large Copper is a large butterfly of the family Lycaenidae, with a wingspan of 44–52 mm. The species exhibits clearly pronounced sexual dimorphism. Males have bright orange wings with narrow black margins and white fringes. Females have broader dark brown margins on the forewings with a parallel row of dark spots. It is primarily a wetland species, preferring undisturbed grassy areas along riverbanks and streams, especially sites with host plants. To avoid losses from flooding, it often uses plants growing farther from the water's edge. The main natural threats include reed-nesting birds, amphibians, and small mammals.

### The Fire-Bellied Toad (*Bombina bombina*)

Photo: Mihai Sorin Pascu



This species inhabits slow-flowing sections of rivers such as the Apa Mare, Ierului, and Șișcau, as well as drainage channels and oxbows near these streams, and permanent or temporary ponds on meadows.

Occasionally, it can even be found in cultivated fields. During the breeding season, it appears in temporary or permanent ponds and flooded pastures. Individuals living in this area emerge from hibernation in March, entering the water to reproduce. The breeding period lasts until

July. Migration from aquatic habitats to hibernation sites begins in September.

### The Red-Footed Falcon (*Falco vespertinus*)

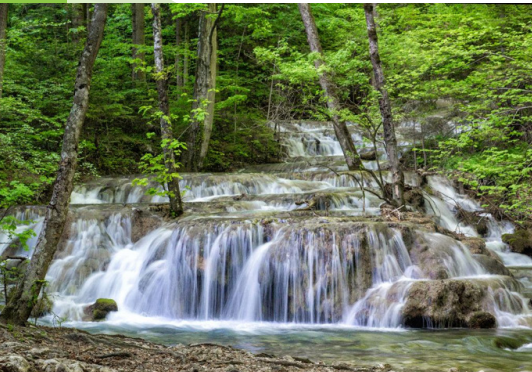
Photo: Dan Stănescu



The Red-Footed Falcon is a bird of prey and a migratory species that is found in Eastern Europe and Asia, wintering in Africa. Due to habitat loss and intensive hunting, its population has been steadily declining, and the species is now globally threatened. Its distinctive hunting behaviour sets it apart from the Common Kestrel. It often hovers in place, scanning the ground below, and then dives sharply to capture its prey. When feeding the chicks, the youngest nestlings receive the most food, more frequently and regularly than their siblings do. Males have sooty grey upperparts with reddish thighs, while females have an orange eye-ring and reddish-orange feet. Their diet varies and includes insects, small birds, rodents, and other small animals.

### The Nera and Beușnița Gorges - National Park

The Nera and Beușnița Gorges National Park is located in Romania, in Caraș-Severin County, encompassing the middle course of the Nera River and the upper course of the Beu River. Established in 2000, the park covers an area of 36,758 hectares (90,830 acres). It is known for its extraordinary biodiversity. The park's forests are home to species such as the oak, hornbeam, European beech, ash, black alder, Turkish hazel, cornelian cherry, butcher's broom, and lilac. Among the most notable plant species of the area are several orchids, fritillaries, yellow flax, and yellow crocus. The most numerous representatives of the wildlife include amphibians, birds, bats, and vipers, as well as large mammals such as the brown bear and the grey wolf. The park's geomorphology has created a spectacular landscape of gorges, hills, valleys, caves, ravines, waterfalls, and rare lakes. The dominant habitats are wetlands, forests, and cliffs. The widely known natural landmarks include Ochiul Beilui Lake (Beu's Eye Lake), Beușnița Waterfalls, La Vaioaga Waterfall and Devil's Lake (Lacul Dracului).

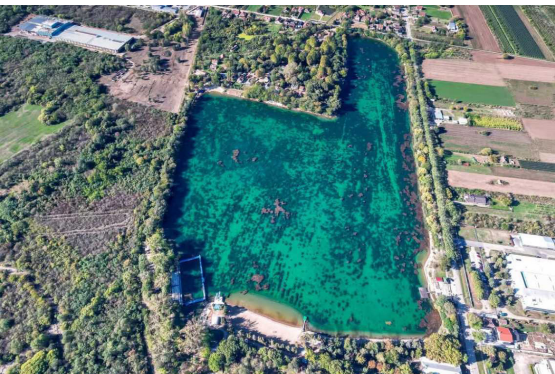


La Vaioaga Waterfall is situated just 3 km from the national park's entrance. However, the most popular landmark, enjoyed throughout the year, is Beu's Eye Lake. Surprisingly, this lake is only 3 meters deep and is fed by a karst spring. It never freezes, and its turquoise colour remains unchanged in all seasons. Its name comes from a local legend that speaks about a tragic love story. The Beușnița Waterfall is located less than a 30-minute walk from Beu's Eye Lake. The waterfall is comprised of a cascade of smaller waterfalls leading to the most impressive one, 5 meter high, covered in moss and lichens. Devil's Lake was formed when the roof of a cave collapsed. With its deep turquoise water reaching a depth of 12 meters, it owes its name to a local legend about a devil who drowned in the dark cave waters. The Nera and Beușnița Gorges National Park is a protected area and a true oasis of peace and unspoiled nature.

Its visitors can enjoy a wide range of recreational activities. Hiking is especially popular, with trails that pass through the Nera Gorge, alongside crystal-clear lakes, and through stone-carved tunnels. One such trail is an 8–9 hour hiking route that crosses the entire protected area, offering views of pristine lakes and natural rock formations. The park's waterways provide excellent opportunities for kayaking and rafting, especially in late spring and early summer, when water levels are most favourable. Photography enthusiasts will find plenty of subjects in the vibrant landscapes of the park, a diverse flora, and a rich wildlife. Camping is allowed in designated areas, allowing visitors to immerse themselves in the park's natural beauty. Conservation efforts in this national park are focused on preserving its unique ecosystems and biodiversity, which make it so special.

## The Bela Crkva Lakes

The Bela Crkva municipality area, in the tourist sense, is known for the Bela Crkva Lakes. These lakes were sporadically formed through the process of gravel extraction for the construction industry. There are six lakes in total, four of which are large (City (Gradsko), Vračev Gaj (Vračevgajsko), Gravel Pit (Šljunkara), and New (Novo) Lakes), while the remaining two are smaller (Small (Malo) and Carp (Šaransko) Lakes). Due to





the clarity of the water, which reaches up to 4 meters, these lakes are also referred to as the “Pearls of Banat,” and Bela Crkva town as the “Venice of Vojvodina.” Bela Crkva has accommodation capacity of around 600 beds of various categories, and during summer, it hosts up to 10,000 visitors daily. Two of the lakes, City and Vračev Gaj ones are fully developed for swimming, while Gravel Pit Lake is only partially developed. The other lakes are used for fishing and bird watching.

City or Main Lake is the oldest lake in Bela Crkva, covering an area of 18 hectares, with the deepest point reaching about 6 meters. This lake is the symbol of the Bela Crkva lakes, the most visited and the best developed. In addition to the main beach, which is suitable for children and non-swimmers due to its long shallow area, there are several other well-equipped beaches and a water polo field for the “Jezero” (Lake) Water Polo Club. Numerous hospitality facilities are located in its close vicinity. A pedestrian and bicycle path, approximately 2 km long, has been built along the entire lake.

Just a few hundred meters from City Lake, you will find Vračev Gaj Lake, which hosts the largest Bela Crkva car camping site. Many hospitality establishments are also located near this lake. In the western part of the lake is the modern “Oaza” (Oasis) camping site, and for adrenaline enthusiasts, there is the “Avantura Park” (Adventure park).

In terms of promotion of protected natural areas, cross-border cooperation is a crucial segment of the project area’s sustainable development, as it promotes the natural values of protected areas and raises public awareness at the local and regional levels regarding the importance of nature conservation.

### The Deliblato Sands Special Nature Reserve

The protected area, Deliblato Sands special nature reserve, is located in the northeastern part of Serbia and covers a total area of 34,829.32 hectares. It represents the largest European area formed from aeolian sand deposits, characterised by distinct dune relief forms and diverse sandy, steppe, forest, and wetland ecosystems.





This unique mosaic of habitats hosts typical and endemic species of flora and fauna. The Deliblato Sands, special nature reserve, is one of the most important biodiversity centres in Europe. Part of the reserve, the Labudovo okno area on the Danube River, has been designated as Ramsar wetlands of international importance.

The Deliblato Sands is rich in both plant and animal life. Here, over 900 plant species have been recorded, 10% of which are medicinal plants, while many rare and endangered species are under protection, including the spring pheasant's eye (*Adonis vernalis*), steppe peony (*Paeonia tenuifolia*), pasque flower (*Pulsatilla grandis*), rindera (*Rindera umbellata*), *Artemisia pancicii*, various orchid species, and many others. Around 200 bird species have been registered, among which nesting species include the Eastern Imperial Eagle (*Aquila heliaca*), Booted Eagle (*Aquila pennata*), Saker Falcon (*Falco cherrug*), and White-tailed Eagle (*Haliaeetus albicilla*). The Sands also provides a habitat for the European Ground Squirrel (*Spermophilus citellus*) and the wolf as well.

The Deliblato Sands area holds great potential for the development of eco-tourism, sports and recreational tourism, birdwatching, as well as for the production of medicinal and aromatic herbs and beekeeping products.

### Project activities:

- Preparing and implementing a joint monitoring system for protected species, ecosystem services, and the use of natural resources within the Satchinez Marsh and Caraş–Nera protected areas;
- Joint monitoring of air and water quality in local communities across the Satchinez Marsh and Caraş–Nera project areas;
- Joint cleaning of dumping sites and managing of waste within the Satchinez Marsh and Caraş–Nera project areas;
- Establishing a joint coordination body to strengthen the capacities in the field of environmental protection at both local and regional levels;
- Developing and promoting a “Joint Strategy and Action Plan for the Municipalities of Satchinez and Bela Crkva – focusing on pollution control, nature and biodiversity protection, landscape management, and sustainable use of natural resources”;
- Clearing reed-covered areas in the Satchinez Marsh;
- Tree and shrub planting within the project area;
- Managing and protecting pastures and meadows in the Satchinez Marsh;
- Developing thematic trails in the Satchinez Marsh and Caraş–Nera areas;
- Organising awareness-raising activities to promote environmental responsibility;
- Establishing and operating an “Environmental Education Visitor Centre” in the Caraş–Nera area, serving as an information hub for environmental, tourism, and local communities.

**Expected Project Results:**

- Development of green infrastructure aimed at improving cultural, tourism, and educational facilities – 3 hectares,
- Revitalisation of habitats designated for tourism, cultural, social, and educational activities – 46 hectares,
- Development and implementation of three pilot actions for joint monitoring of air and water quality
- A joint strategy and single air quality monitoring system, along with the engagement of 940 participants in joint promotional and educational activities.

Considering that the “Green Trail” project area is characterised by an exceptional mosaic of landscapes and well-preserved natural values, including a rich diversity of plant and animal species, it represents an important international ecological corridor that connects the habitats of the Carpathians and the Pannonian Plain. A holistic approach to establishing a sustainable development model for nature protection is of particular importance, as well as a broader perspective on the project area that would include the significant surrounding landscape units and protected areas: The Bela Crkva Lakes, the Nera and Beuşniţa Gorges National Park, and the Deliblato Sands Special Nature Reserve

**Total project budget:**

1,754,388.54 EUR

**EU funding:**

1,491,230.24 EUR

**Project duration: 24 months**

(19 December 2024 to 18 December 2026)

1. Lead partner - Excelsior Association for the Promotion of Natural and Cultural Heritage of Banat and Crisana – Tm România (RO) ExcelsiorTm LP
2. Provincial Secretariat for Urban Planning and Environmental Protection Serbia (RS)  
EKOVOJVODINA PP
3. Municipality of Bela Crkva Serbia (RS)
4. myNature Association (RO)



**Project name and JEMS code:**

CROSS-BORDER COOPERATION NETWORK FOR SUSTAINABLE USE OF NATURAL  
RESOURCES RORS 00127

**Material editor/responsible for publication:**

Provincial Secretariat for Urbanism and Environmental Protection

**e-mail:** ekourb@vojvodina.gov.rs;

**website:** ekourbapv@vojvodina.gov.rs

**Publishing date:** NOVEMBER 2025

The responsibility for the content of this material is that of the author. The content of this material does not necessarily represent the official position of the European Union. Reproduction is authorised provided the source is acknowledged and any changes are indicated.

In case of any complaints, please contact:

**romania-serbia@mdlpa.gov.ro**

**www.romania-serbia.net**